

**LEGEND**

- ⊕ B-1 BORING LOCATION
  - ⊕ B-2W BORING LOCATION WITH WELL
- SCALE: 1" = 30'

PROJECT NAME:  
**2401 3RD AVENUE  
BRONX, NEW YORK**

CLIENT NAME:  
**NY DEVELOPERS & MANAGEMENT INC.  
1825 65TH STREET  
BROOKLYN, NEW YORK 11204**

GEOTECHNICAL ENGINEER:  
**PILLORI ASSOCIATES, P.A.**  
*Geotechnical Engineering*

71 Route 35  
Laurence Harbor, New Jersey 08879  
Tel. 732.335.0059 Fax. 732.335.8515

333 Meadows Parkway, Suite 102  
Soccus, New Jersey 07094  
Tel. 201.558.0065 Fax. 201.558.1427  
email: office@pillorassociates.com

Project: **2401 3rd Avenue  
Bronx, New York**  
Date: 09/08/2015 - 09/09/2015  
Contractor: Warren George, Inc.

Boring No.: **B-1**  
Sheet: 1 of 2  
Date: 09/08/2015 - 09/09/2015  
Ground El: 9.3±  
Contractor: Warren George, Inc.  
Groundwater Depth: NA

Depth Feet	SAMPLES		SOIL DESCRIPTION	Classification Depth Elevation
	Number	Blows / 6"		
0	S-1	10-6-4-6	6" Concrete	
5	S-2	10-8-7-5	Black fine Sand, little Silt, some coarse to fine Gravel with brick fragments and misc. debris	FILL (7)
10	S-3	8-8-8-20	Possible Fill: Brown coarse to fine Sand, trace Silt, some coarse to fine Gravel	
15	S-4	8-9-9-9	Brown coarse to fine Sand, trace Silt, some coarse to fine Gravel	SW (3b)
20	S-5	10-11-13-21	Brown coarse to fine Sand, little Silt, Some medium to fine Gravel	SM (3a)
25	S-6	14-20-16-34	Brown coarse to fine Sand, little Silt, Some medium to fine Gravel	SM/GM (3b/2b)
30	S-7	23-16-10-17	Gray coarse to fine Sand, little Silt, and medium to fine Gravel	SM/GM (3b/2b)
35	S-8	9-6-6-6	Gray coarse to fine Sand, little Silt, and medium to fine Gravel	SM/GM (3b/2b)
40	S-9	50/0"	Cobbles and boulders from 40.0' to 42.0'	
45	S-10	13-16-15-14	Gray coarse to fine Sand, trace Silt	SW (3b)
50	S-11	12-13-15-17	Gray coarse to fine Sand, trace Silt	SW (3b)

PILLORI ASSOCIATES, P.A. Geotechnical Engineering Project No.: 150303A

Project: **2401 3rd Avenue  
Bronx, New York**  
Date: 09/08/2015 - 09/09/2015  
Contractor: Warren George, Inc.

Boring No.: **B-1**  
Sheet: 2 of 2  
Date: 09/08/2015 - 09/09/2015  
Ground El: 9.3±  
Contractor: Warren George, Inc.  
Groundwater Depth: NA

Depth Feet	SAMPLES		SOIL DESCRIPTION	Classification Depth Elevation
	Number	Blows / 6"		
55	S-11	12-13-15-17	Gray coarse to fine Sand, trace Silt	SW (3b)
60	S-12	7-10-15-16	Gray coarse to fine Sand, trace Silt	SW (3b)
65	S-13	11-10-14-17	Gray coarse to fine Sand, trace Silt	SW (3b)
70	S-14	20-20-19-20	Red brown coarse to fine Sand, and seams of silty Clay, little fine Gravel	SC (3a)
75	S-15	19-21-20-23	Red brown coarse to fine Sand, and seams of silty Clay, little fine Gravel	SC (3a)
80	S-16	18-22-24-26	Gray coarse to fine Sand, trace Silt, trace fine Gravel	SW (3a)
85	S-17	20-26-27-24	Gray coarse to fine Sand, trace Silt, trace fine Gravel	SW (3a)
90			End of Boring	820" -72.7

PILLORI ASSOCIATES, P.A. Geotechnical Engineering Project No.: 150303A

No.	DRAWINGS/REVISIONS	DATE

DRILL RIG TYPE: TRUCK MOUNTED  
 DRILLING METHOD: ROTARY  
 SAMPLE HAMMER WEIGHT: 140 LBS.  
 CASING HAMMER WEIGHT: 300 LBS.  
 CASING DIAMETER: 4"  
 SAMPLER DIAMETER: 2"

DRAWING TITLE:  
**BORING LOCATION PLAN  
BORING B-1**

DRAWN:	CHECKED:	REVIEWED:
RM	GP	GP
DATE: 09/22/2015		
SCALE: AS NOTED		
JOB NO.: 150303A		
DRAWING No. <b>B-001.00</b>		
SHEET 1 OF 7		

Project: 2401 3rd Avenue Bronx, New York			Boring No.: B-2W	
Date: 09/03/2015 - 09/08/2015			Sheet: 1 of 2	
Contractor: Warren George, Inc.			Ground El: 9.1±	
			Groundwater Depth: 9'0"	
Depth Feet	SAMPLES		SOIL DESCRIPTION	Classification Depth Elevation
	Number	Blows / 6"		
5	S-1	11-18-14-18	6" Concrete	
	S-2	49-100/5"	Brown fine Sand, trace Silt, some fine Gravel with brick and concrete fragments	FILL (7)
10	S-3	1-1-3-3	Possible Fill: Brown medium to fine Sand, little Silt	
15	S-4	14-15-14-10	Brown medium to fine Sand, little Silt, little medium to fine Gravel	SM (3b)
20	S-5	7-7-7-7		
25	S-6	5-7-7-10	Brown coarse to fine Sand, trace Silt	SW (3b)
30	S-7	10-12-15-16		
35	S-8	12-12-14-12	Gray coarse to fine Sand, trace Silt	
40	S-9	7-10-14-18	Brown medium to fine Sand, trace Silt	SP (3b)
45	S-10	13-22-24-24		
50	S-11	13-15-14-13	Gray coarse to fine Sand, trace Silt, some fine Gravel	SW (3a)

PILLORI ASSOCIATES, P.A. Geotechnical Engineering Project No.: 150303A

Project: 2401 3rd Avenue Bronx, New York			Boring No.: B-2W	
Date: 09/03/2015 - 09/08/2015			Sheet: 2 of 2	
Contractor: Warren George, Inc.			Ground El: 9.1±	
			Groundwater Depth: 9'0"	
Depth Feet	SAMPLES		SOIL DESCRIPTION	Classification Depth Elevation
	Number	Blows / 6"		
55	S-11	13-15-14-13	Gray coarse to fine Sand, trace Silt, some fine Gravel	SW (3a)
60	S-12	10-11-15-15	Gray fine Sand, little Silt, little fine Gravel	SM (3b)
65	S-14	11-17-26-27	Gray coarse to fine Sand, trace Silt	SW (3a)
70	S-15	12-12-17-19	Gray medium to fine Sand, trace Silt	SP (3a)
75	S-16	100/4"	Decomposed Gneiss	(1d)
80	S-17	50/0"	End of Boring	

PILLORI ASSOCIATES, P.A. Geotechnical Engineering Project No.: 150303A

Project: 2401 3rd Avenue Bronx, New York			Boring No.: B-3	
Date: 08/10/2015			Sheet: 1 of 2	
Contractor: Warren George, Inc.			Ground El: 6.5±	
			Groundwater Depth: NA	
Depth Feet	SAMPLES		SOIL DESCRIPTION	Classification Depth Elevation
	Number	Blows / 6"		
5	S-1	11-6-4-8	5" Concrete	
	S-2	24-12-3-3	Black coarse to fine Sand, little Silt, little medium to fine Gravel with misc. debris and brick fragments	FILL (7)
10	S-3	WOH	Dark gray Silt and Clay	MH (6)
15	S-4	WOH-3-3-1		
20	S-5	6-4-4-3	Gray fine Sand, some Silt	SM (6)
25	S-6	5-4-5-6		
30	S-7	8-6-8-6	Brown medium to fine Sand, little Silt, trace medium to fine Gravel	SM (3b)
35	S-8	12-10-12-17	Gray fine Sand, little Silt	SM (3b)
40	S-9	10-10-12-10		
45	S-10	42-100/2"	Gray fine Sand, little Silt, trace medium to fine Gravel	SM (3a)
50			Gneiss Bedrock: very Hard, moderately jointed	

PILLORI ASSOCIATES, P.A. Geotechnical Engineering Project No.: 150303A

Project: 2401 3rd Avenue Bronx, New York			Boring No.: B-3	
Date: 08/10/2015			Sheet: 2 of 2	
Contractor: Warren George, Inc.			Ground El: 6.5±	
			Groundwater Depth: NA	
Depth Feet	SAMPLES		SOIL DESCRIPTION	Classification Depth Elevation
	Number	Blows / 6"		
55	R-1	RUN = 60" 50.0' - 55.0' REC = 100% RQD = 90%	Gneiss Bedrock: very Hard, mediumly jointed	(1a)
			End of Boring	

PILLORI ASSOCIATES, P.A. Geotechnical Engineering Project No.: 150303A

Project: 2401 3rd Avenue Bronx, New York			Boring No.: B-4	
Date: 09/02/2015 - 09/03/2015			Sheet: 1 of 1	
Contractor: Warren George, Inc.			Ground El: 6.7±	
			Groundwater Depth: NA	
Depth Feet	SAMPLES		SOIL DESCRIPTION	Classification Depth Elevation
	Number	Blows / 6"		
5	S-1	12-14-11-16	5" Concrete	
	S-2	100/5"	Black fine Sand, and coarse to fine Gravel with cinders and concrete fragments	FILL (7)
10	S-3	12-2-3-3	Dark gray Silt and Clay, trace shells	MH (6)
15	S-4	1-2-3-3	Black coarse to fine Sand, and Silt with Shells	SM (6)
20	S-5	14-17-100/3"	Brown coarse to fine Sand, trace Silt, some medium to fine Gravel	SW (3a)
25	S-6	19-13-14-21	Brown medium to fine Sand, little Silt	SM (3b)
30	S-7	13-9-9-10	Gray coarse to fine Sand, trace Silt, trace fine Gravel	SW (3b)
35	S-8	15-19-19-20	Gray coarse to fine Sand, little Silt	SM (3a)
40	R-1	RUN = 60" 39.0' - 44.0' REC = 100% RQD = 95%	Gneiss Bedrock: very Hard, mediumly jointed	(1a)
45			End of Boring	

PILLORI ASSOCIATES, P.A. Geotechnical Engineering Project No.: 150303A

Project: 2401 3rd Avenue Bronx, New York			Boring No.: B-5	
Date: 08/10/2015 - 08/11/2015			Sheet: 1 of 1	
Contractor: Warren George, Inc.			Ground El: 6.2±	
			Groundwater Depth: NA	
Depth Feet	SAMPLES		SOIL DESCRIPTION	Classification Depth Elevation
	Number	Blows / 6"		
5	S-1	12-12-38-40	6" Concrete	
	S-2	8-4-5-2	Black coarse to fine Sand, trace Silt, some medium to fine Gravel with miscellaneous debris	FILL (7)
10	S-3	3-4-5-2	Gray fine Sand, trace Silt	SP (6)
15	S-4	WOH	Dark gray Silt and Clay	MH (6)
20	S-5	6-5-2-3	Brown fine Sand and clayey Silt, trace fine Gravel	SM (6)
25	S-6	18-6-7-9	Gray fine Sand, trace Silt	SP (3b)
30	S-7	15-24-57-67		
35	S-8	22-16-16-19	Brown coarse to fine Sand, trace Silt, some coarse to fine Gravel	SW (3a)
40	S-9	100/0"		
45	R-1	RUN = 60" 41.0' - 46.0' REC = 90% RQD = 76%	Gneiss Bedrock: medium Hard, slightly weathered, mediumly jointed	(1b)
50			End of Boring	

PILLORI ASSOCIATES, P.A. Geotechnical Engineering Project No.: 150303A

PROJECT NAME:

2401 3RD AVENUE  
BRONX, NEW YORK

CLIENT NAME:  
NY DEVELOPERS & MANAGEMENT INC.  
1825 65TH STREET  
BROOKLYN, NEW YORK 11204

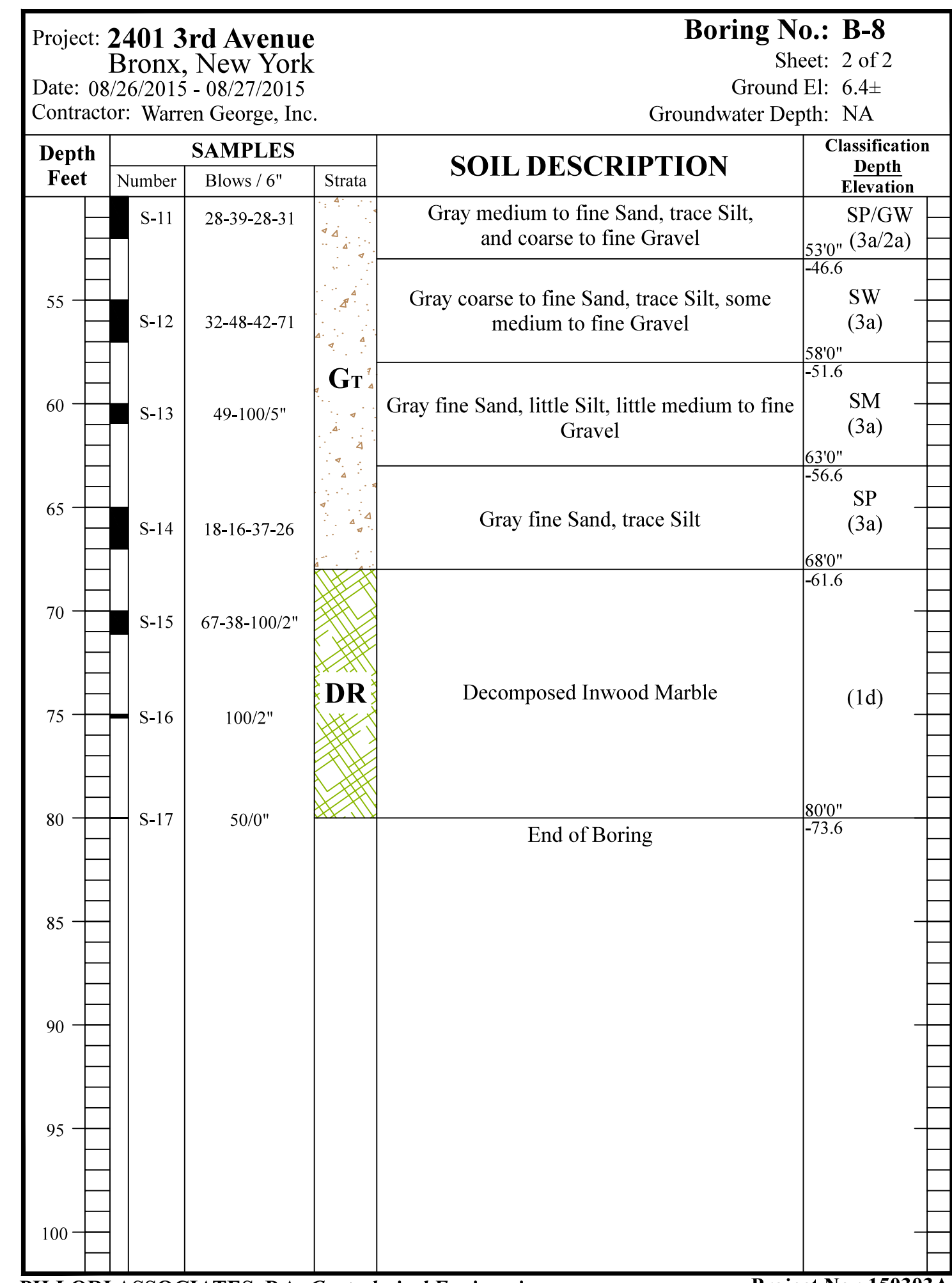
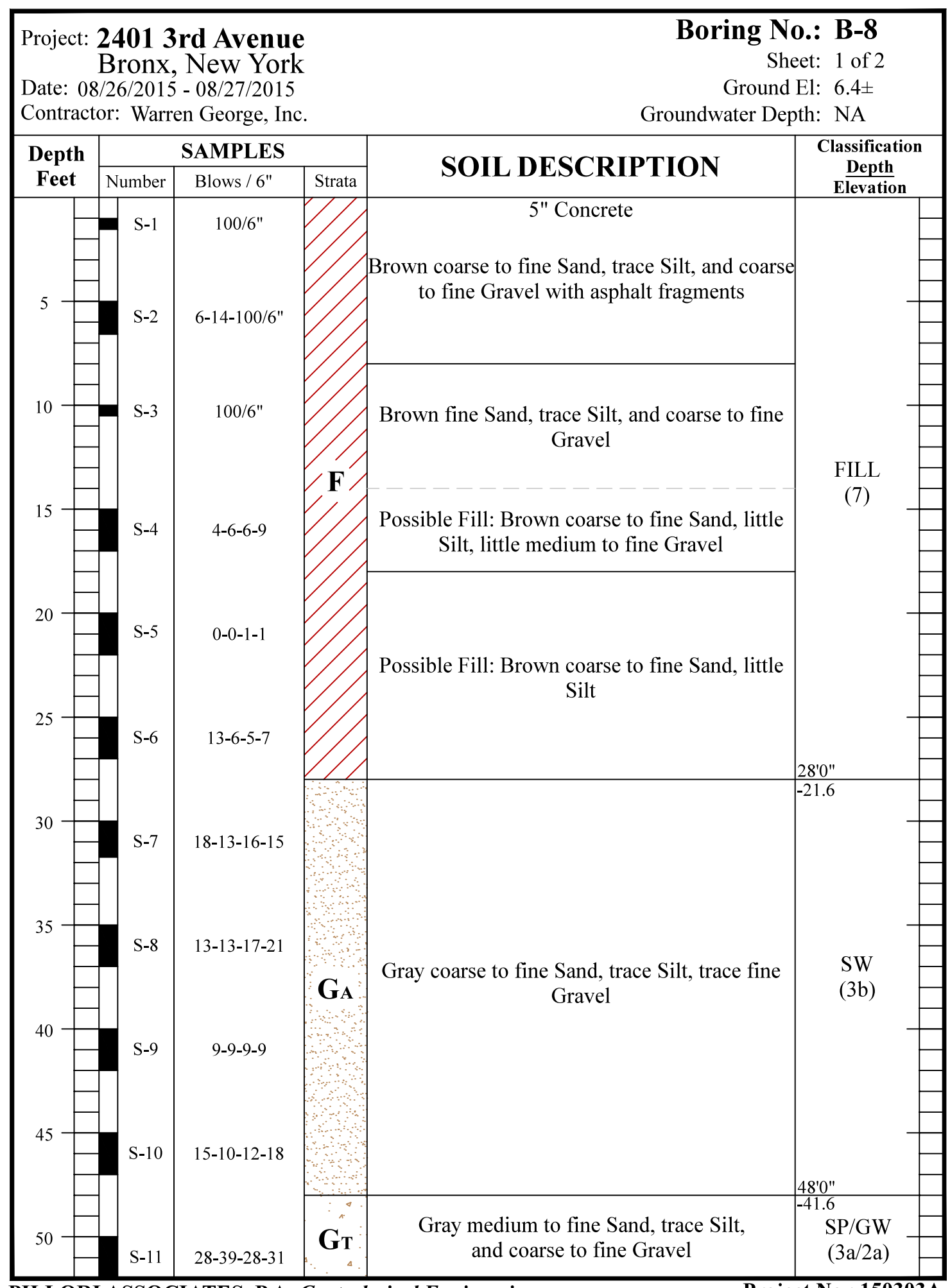
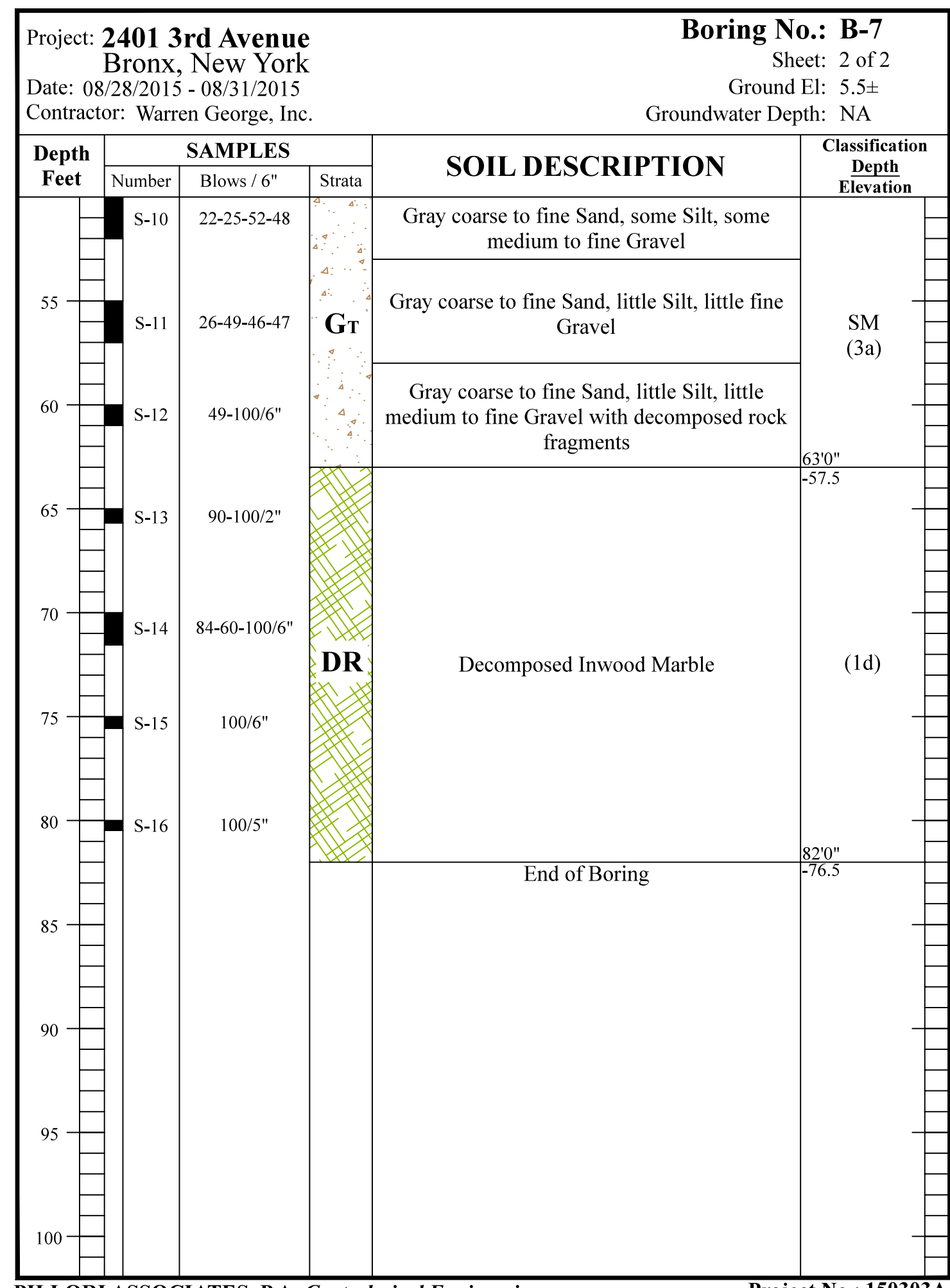
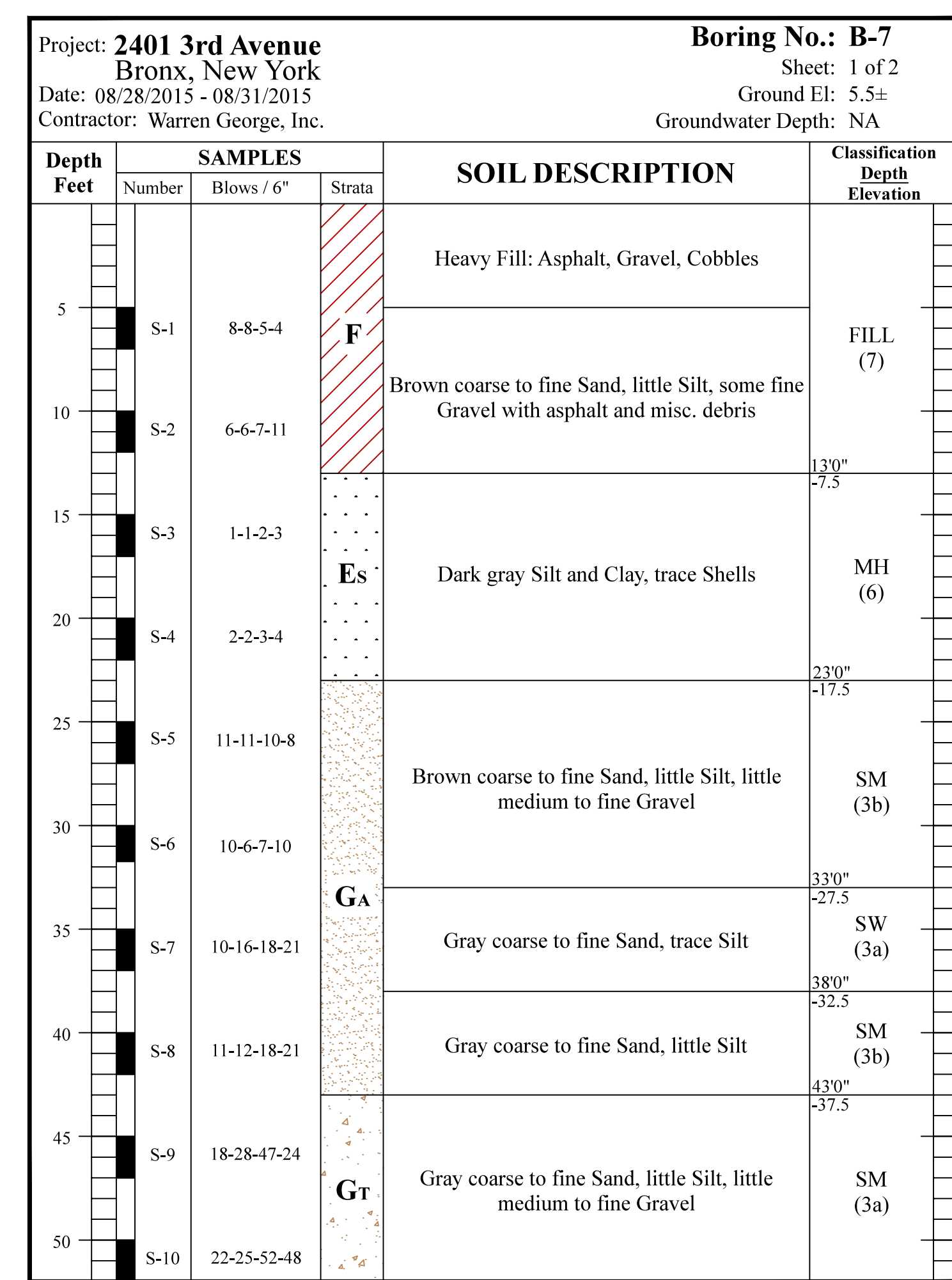
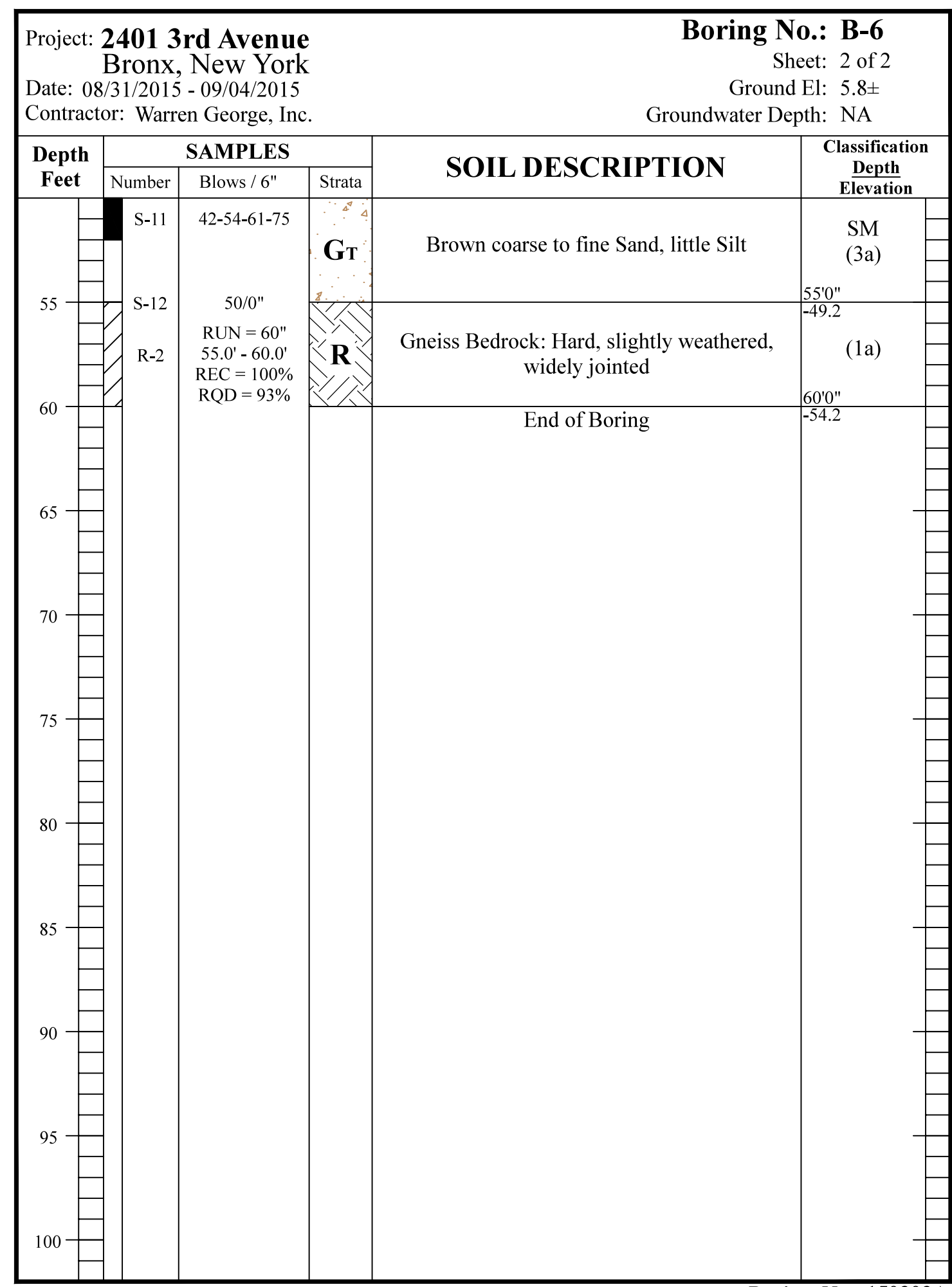
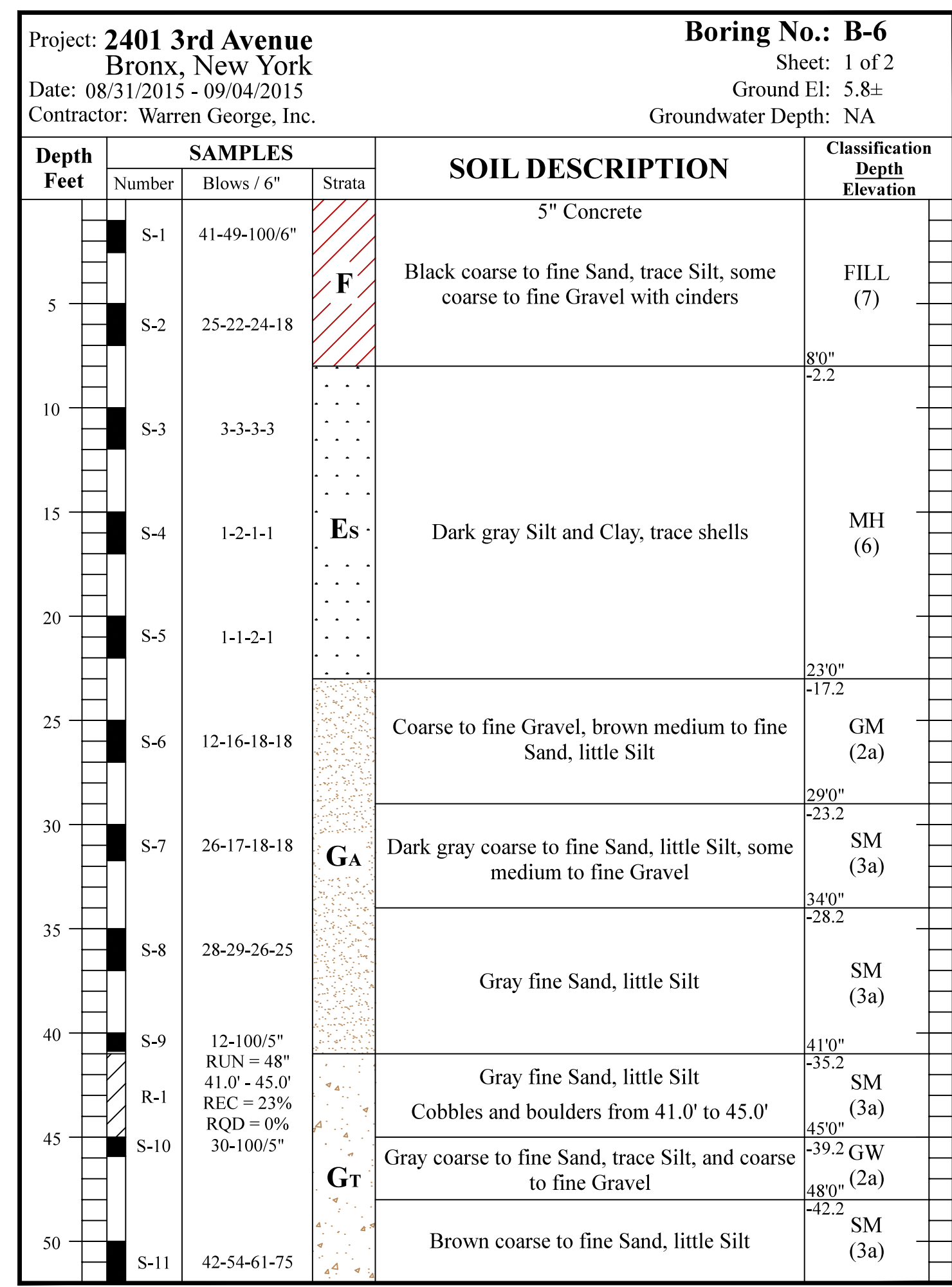
GEOTECHNICAL ENGINEER:  
 PILLORI ASSOCIATES, P.A.  
Geotechnical Engineering  
71 Route 35  
Laurence Harbor, New Jersey 08879  
Tel. 732.335.0059 Fax. 732.335.8515  
333 Meadows Parkway, Suite 102  
Socastus, New Jersey 07094  
Tel. 201.558.0065 Fax. 201.558.1427  
email: office@pilloriasociates.com

No.	DRAWINGS/REVISIONS	DATE

DRILL RIG TYPE: TRUCK MOUNTED  
DRILLING METHOD: ROTARY  
SAMPLE HAMMER WEIGHT: 140 LBS.  
CASING HAMMER WEIGHT: 300 LBS.  
CASING DIAMETER: 4"  
SAMPLER DIAMETER: 2"


DRAWING TITLE:  
BORINGS B-2W TO B-5

DRAWN	CHECKED	REVIEWED
RM	GP	GP
DATE: 09/22/2015		
SCALE: AS NOTED		
JOB NO.: 150303A		
DRAWING No. B-002.00		
SHEET 2 OF 7		



PROJECT NAME:  
**2401 3RD AVENUE  
BRONX, NEW YORK**

CLIENT NAME:  
**NY DEVELOPERS & MANAGEMENT INC.  
1825 65TH STREET  
BROOKLYN, NEW YORK 11204**

GEOTECHNICAL ENGINEER:  
 **PILLORI ASSOCIATES, P.A.**  
Geotechnical Engineering

71 Route 35  
Laurence Harbor, New Jersey 08879  
Tel. 732.335.0059 Fax. 732.335.8515  
333 Meadows Parkway, Suite 102  
Socorro, New Jersey 07094  
Tel. 201.558.0065 Fax. 201.558.1427  
email: office@pillorassociates.com

No.	DRAWINGS/REVISIONS	DATE

DRILL RIG TYPE: TRUCK MOUNTED  
DRILLING METHOD: ROTARY  
SAMPLE HAMMER WEIGHT: 140 LBS.  
CASING HAMMER WEIGHT: 300 LBS.  
CASING DIAMETER: 4"  
SAMPLER DIAMETER: 2"

DRAWING TITLE:  
**BORINGS B-6 TO B-8**

DRAWN	CHECKED	REVIEWED
RM	GP	GP

DATE: 09/22/2015  
SCALE: AS NOTED  
JOB NO.: 150303A  
DRAWING No.: **B-003.00**  
SHEET 3 OF 7



Project: **2401 3rd Avenue**  
 Bronx, New York  
 Date: 08/05/2015 - 08/06/2015  
 Contractor: Warren George, Inc.

Boring No.: **B-12**  
 Sheet: 1 of 2  
 Ground El: 7.5±  
 Groundwater Depth: NA

Depth Feet	SAMPLES			SOIL DESCRIPTION	Classification Depth Elevation
	Number	Blows / 6"	Strata		
5	S-1	12-12-9-10	F	Brown fine Sand, trace Silt, trace fine Gravel with brick fragments and misc. debris	FILL (7)
	S-2	7-2-14-15			
10	S-3	WOH	Es	Dark gray Silt and Clay	MH (6)
15	S-4	8-8-7-9	GA	Gray coarse to fine Sand, little Silt, little fine Gravel	SM (3b)
20	S-5	5-5-3-3			
25	S-6	8-6-5-6			
30	S-7	9-10-10-9			
35	S-8	10-8-7-5	GA	Gray medium to fine Sand, little Silt, trace medium to fine Gravel	SM (3b)
40	S-9	11-9-10-8			
45	S-10	10-7-5-4			
50	S-11	12-7-5-6		Gray medium to fine Sand, little Silt, some coarse to fine Gravel	

PILLORI ASSOCIATES, P.A. Geotechnical Engineering Project No.: 150303A

Project: **2401 3rd Avenue**  
 Bronx, New York  
 Date: 08/05/2015 - 08/06/2015  
 Contractor: Warren George, Inc.

Boring No.: **B-12**  
 Sheet: 2 of 2  
 Ground El: 7.5±  
 Groundwater Depth: NA

Depth Feet	SAMPLES			SOIL DESCRIPTION	Classification Depth Elevation
	Number	Blows / 6"	Strata		
55	S-11	12-7-5-6	GA	Gray medium to fine Sand, little Silt, trace coarse to fine Gravel	SM (3b)
60	S-12	10-6-6-5			
65	S-13	14-8-7-8			
70	S-14	12-6-7-9			
75	S-15	30-18-17-20	GA	Gray fine Sand, some Silt	SM (3a)
80	S-16	22-27-39-38			
85	S-17	10-13-16-22			
90				End of Boring	

PILLORI ASSOCIATES, P.A. Geotechnical Engineering Project No.: 150303A

Project: **2401 3rd Avenue**  
 Bronx, New York  
 Date: 08/24/2015 - 08/25/2015  
 Contractor: Warren George, Inc.

Boring No.: **B-13**  
 Sheet: 1 of 2  
 Ground El: 7.4±  
 Groundwater Depth: NA

Depth Feet	SAMPLES			SOIL DESCRIPTION	Classification Depth Elevation
	Number	Blows / 6"	Strata		
5	S-1	8-40-100/2"	F	3" Asphalt	
5	S-2	16-37-67-100/2"	F	Brown medium to fine Sand, little Silt with brick and mortar fragments	FILL (7)
10	S-3	1-2-5-7			
15	S-4	WOR-WOH-6-4	Es	Dark gray Silt and Clay	MH (6)
20	S-5	7-13-7-5	GA	Gray coarse to fine Sand, little Silt, little medium to fine Gravel	SM (3b)
25	S-6	7-7-7-8			
30	S-7	7-6-6-6			
35	S-8	6-4-6-4			
40	S-9	7-8-10-9	GA	Gray coarse to fine Sand, trace Silt, little medium to fine Gravel	SW (3b)
45	S-10	9-13-14-15			
50	S-11	12-15-19-19			

PILLORI ASSOCIATES, P.A. Geotechnical Engineering Project No.: 150303A

Project: **2401 3rd Avenue**  
 Bronx, New York  
 Date: 08/24/2015 - 08/25/2015  
 Contractor: Warren George, Inc.

Boring No.: **B-13**  
 Sheet: 2 of 2  
 Ground El: 7.4±  
 Groundwater Depth: NA

Depth Feet	SAMPLES			SOIL DESCRIPTION	Classification Depth Elevation
	Number	Blows / 6"	Strata		
55	S-11	12-15-19-19	GA	Gray coarse to fine Sand, trace Silt	SW (3a)
60	S-12	14-20-20-20			
65	S-13	14-20-20-19			
70	S-14	12-15-15-22	Gt	Gray coarse to fine Sand, trace Silt	SM (3a)
75	S-15	15-22-24-34			
80	S-16	22-52-100/6"			
85	S-17	18-24-25-30			
90				Red brown Clayey Silt	ML (5a)
95				Red brown Clayey Silt, trace fine Sand	
100				End of Boring	

PILLORI ASSOCIATES, P.A. Geotechnical Engineering Project No.: 150303A

Project: **2401 3rd Avenue**  
 Bronx, New York  
 Date: 08/21/2015 - 08/24/2015  
 Contractor: Warren George, Inc.

Boring No.: **B-14A**  
 Sheet: 1 of 2  
 Ground El: 5.3±  
 Groundwater Depth: NA

Depth Feet	SAMPLES			SOIL DESCRIPTION	Classification Depth Elevation
	Number	Blows / 6"	Strata		
5			F	3" Asphalt	
5	S-1	2-2-1-4	F	Gray fine Sand, some Silt, some fine Gravel with brick, and asphalt fragments	FILL (7)
10	S-2	1-1-0-1			
15	S-3	WOR-2-2-2	Es	Dark gray Silt and Clay	MH (6)
20	S-4	5-4-6-3	GA	Gray coarse to fine Sand, trace Silt	SM (3a)
25	S-5	7-5-6-7			
30	S-6	7-9-11-13			
35	S-7	8-9-14-16			
40	S-8	9-15-13-12	GA	Brown coarse to fine Sand, trace Silt	SW (3b)
45	S-9	13-11-12-28			
50	S-10	31-40-19-23			

PILLORI ASSOCIATES, P.A. Geotechnical Engineering Project No.: 150303A

Project: **2401 3rd Avenue**  
 Bronx, New York  
 Date: 08/21/2015 - 08/24/2015  
 Contractor: Warren George, Inc.

Boring No.: **B-14A**  
 Sheet: 2 of 2  
 Ground El: 5.3±  
 Groundwater Depth: NA

Depth Feet	SAMPLES			SOIL DESCRIPTION	Classification Depth Elevation
	Number	Blows / 6"	Strata		
55	S-10	31-40-19-23	Gt	Gray medium to fine Sand, trace Silt	SP (3a)
60	S-11	50/0"			
65	S-12	26-26-31-39			
70	S-13	20-27-25-39			
75	S-14	11-12-18-21			
80	S-15	12-19-24-31		End of Boring	

PILLORI ASSOCIATES, P.A. Geotechnical Engineering Project No.: 150303A

PROJECT NAME:  
**2401 3RD AVENUE  
 BRONX, NEW YORK**

CLIENT NAME:  
**NY DEVELOPERS & MANAGEMENT INC.  
 1825 65TH STREET  
 BROOKLYN, NEW YORK 11204**

GEOTECHNICAL ENGINEER:  
  
**PILLORI ASSOCIATES, P.A.**  
 Geotechnical Engineering

71 Route 35  
 Laurence Harbor, New Jersey 08879  
 Tel. 732.335.0059 Fax. 732.335.8515

333 Meadowlands Parkway, Suite 102  
 Secaucus, New Jersey 07094  
 Tel. 201.558.0065 Fax. 201.558.1427  
 email: office@pilloriassociates.com

No.	DRAWINGS/REVISIONS	DATE

DRILL RIG TYPE: TRUCK MOUNTED  
 DRILLING METHOD: ROTARY  
 SAMPLE HAMMER WEIGHT: 140 LBS.  
 CASING HAMMER WEIGHT: 300 LBS.  
 CASING DIAMETER: 4"  
 SAMPLER DIAMETER: 2"

DRAWING TITLE:  
**BORINGS B-12 TO B-14**

DRAWN	CHECKED	REVIEWED
RM	GP	GP

DATE: 09/22/2015  
 SCALE: AS NOTED  
 JOB NO.: 150303A  
 DRAWING No.: **B-005.00**  
 SHEET 5 OF 7

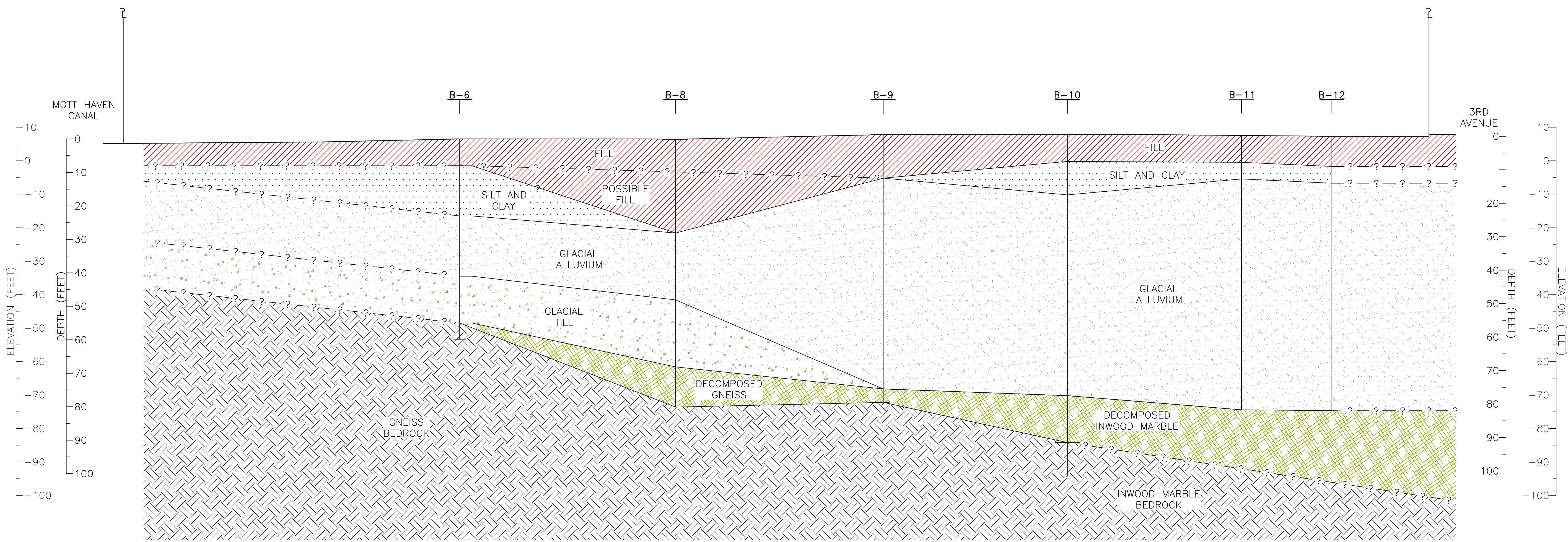


PROJECT NAME:

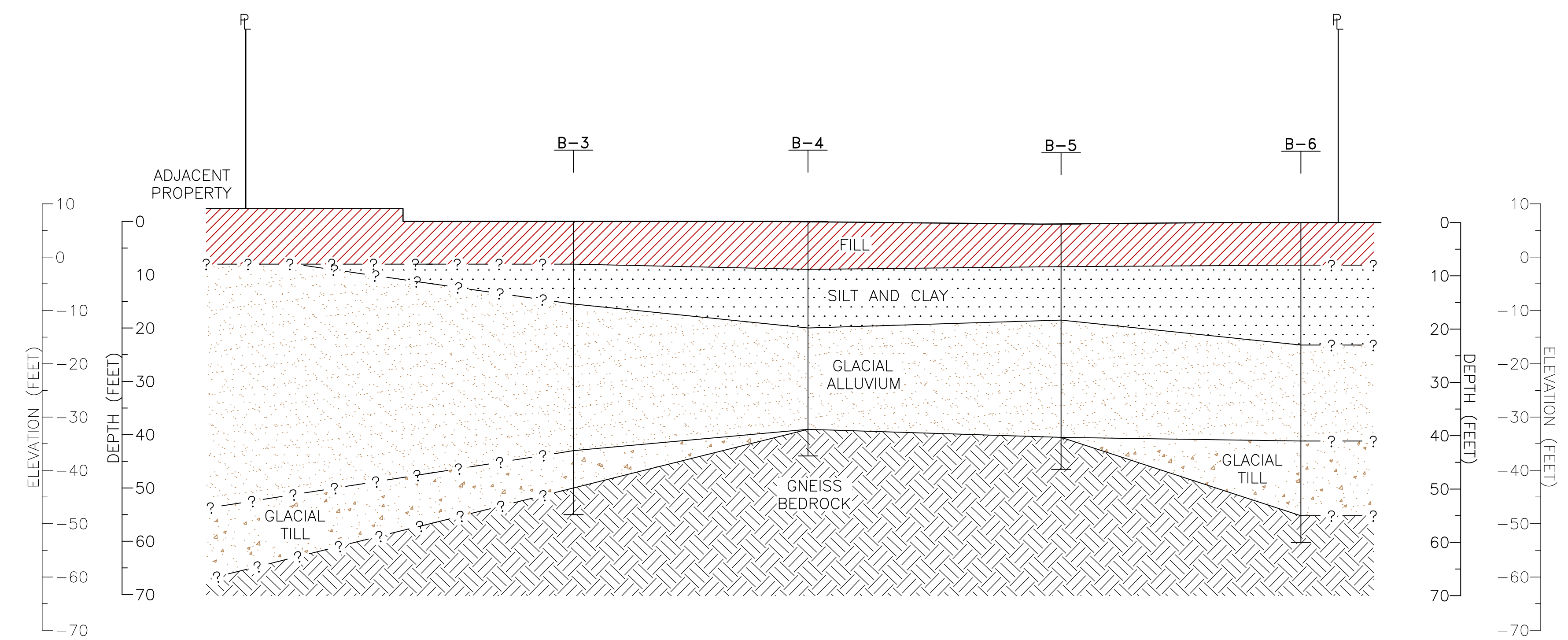
2401 3RD AVENUE  
BRONX, NEW YORK

CLIENT NAME:  
NY DEVELOPERS & MANAGEMENT INC.  
1825 65TH STREET  
BROOKLYN, NEW YORK 11204

GEOTECHNICAL ENGINEER:  
 **PILLORI ASSOCIATES, P.A.**  
Geotechnical Engineering  
71 Route 35, Laurence Harbor, New Jersey 08879  
333 Meadows Parkway, Suite 102, Secaucus, New Jersey 07094  
Tel: 732.335.0059 Fax: 732.335.8515 Tel: 201.558.0065 Fax: 201.558.1427  
email: office@pillorassociates.com



SUBSURFACE SECTION - AA  
SCALE: 1" = 16'



SUBSURFACE SECTION - BB  
SCALE: 1" = 16'

No.	DRAWINGS/REVISIONS	DATE

DRILL RIG TYPE: TRUCK MOUNTED  
 DRILLING METHOD: ROTARY  
 SAMPLE HAMMER WEIGHT: 140 LBS.  
 CASING HAMMER WEIGHT: 300 LBS.  
 CASING DIAMETER: 4"  
 SAMPLER DIAMETER: 2"

DRAWING TITLE:  
**SOIL/ROCK PROFILES**

DRAWN:	CHECKED:	REVIEWED:
RM	GP	GP
		DATE:
		09/22/2015
		SCALE:
		AS NOTED
		JOB NO.:
		150303A
		DRAWING No.
		<b>B-007.00</b>
		SHEET 7 OF 7